



Ongar Road, Romford, RM4

BUTLER & STAG





**Smart and well-presented two bedroom apartment, located on the ground floor of a modern purpose built block.**



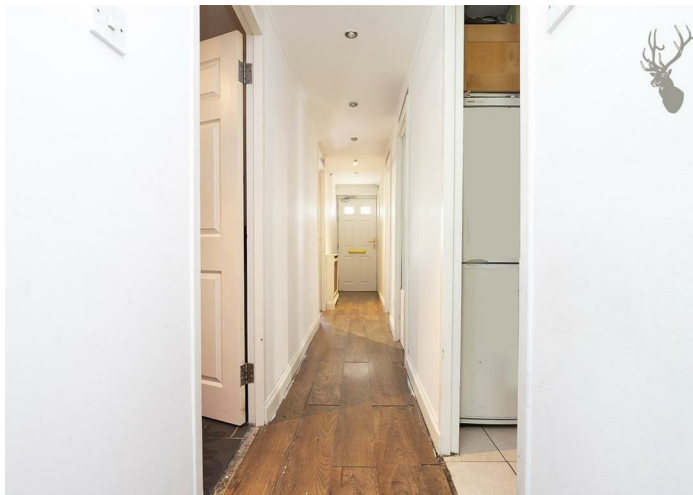
## Leasehold

- Sold by Butler and Stag
- Off Street Parking
- Communal Rear Garden
- Ground Floor
- Modern Two Bedroom Apartment
- Ideal FirstTime Purchase
- Village Location

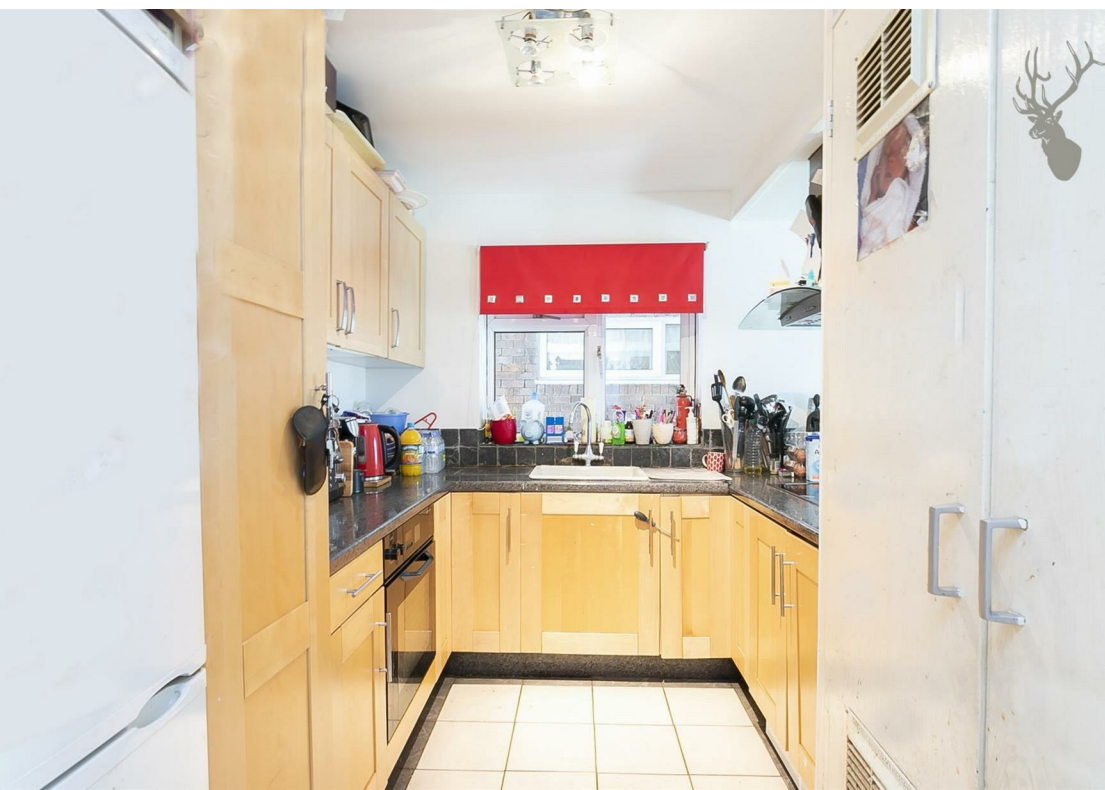
Accessed from the peaceful rear courtyard with its own front door, the accommodation comprises: good size living room which is bright and spacious with a patio door that leads to the communal rear garden, separate and fully fitted kitchen with sleek units, two double bedrooms and smart bathroom.

Externally, there is a secluded communal rear garden ideal for warm summer nights and off street parking for all residents.

Abridge is a beautiful village conveniently located for the nearby towns of Theydon Bois (with central line station), Chigwell and Loughton and also transport links to the M25 and M11. The village offers several pubs and restaurants, coffee bar, convenience store and a primary school.



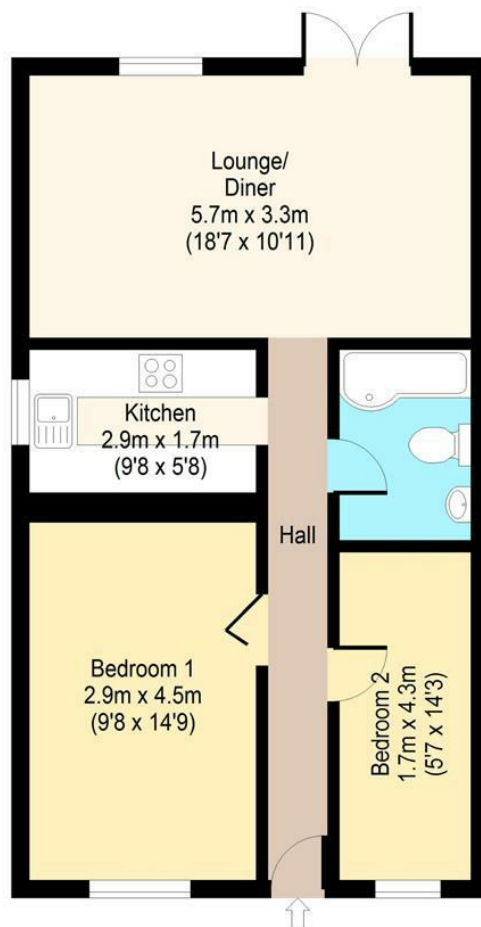




## The Chestnuts

### Ground Floor

Approx. 57 Sq. meters (614 Sq. feet)



Total area: approx. 57 Sq. meters (614 Sq. feet)  
For illustration purposes only - not to scale

[www.lpaplus.com](http://www.lpaplus.com)

# BUTLER & STAG

☎ 01992 667666

🏠 4 Forest Drive, Theydon Bois, Essex, CM16 7EY

✉ [theydon@butlerandstag.com](mailto:theydon@butlerandstag.com)

[www.butlerandstag.uk](http://www.butlerandstag.uk)

IMPORTANT NOTICE - These particulars have been prepared in good faith and they are not intended to constitute part of an offer or contract. We have not performed a structural survey on this property and the services, appliances and specific fittings have not been tested. All photographs, measurements, floor plans and distances referred to are given as a guide and should not be relied upon.